


PROMINENCE
ESTATES



RESIDENTIAL
PROPERTY EXPERTS

COVENTRY, WARWICKSHIRE
& LEAMINGTON SPA

GORDON STREET,
CITY CENTRE, COVENTRY, CV1 3ES

£575 PCM

GORDON STREET



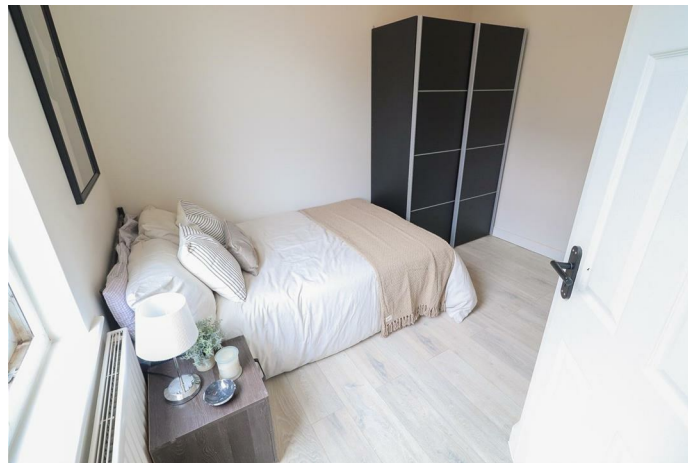
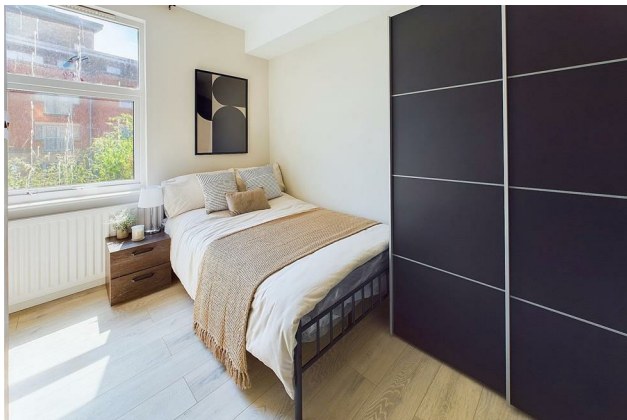
PROMINENCE
— ESTATES —

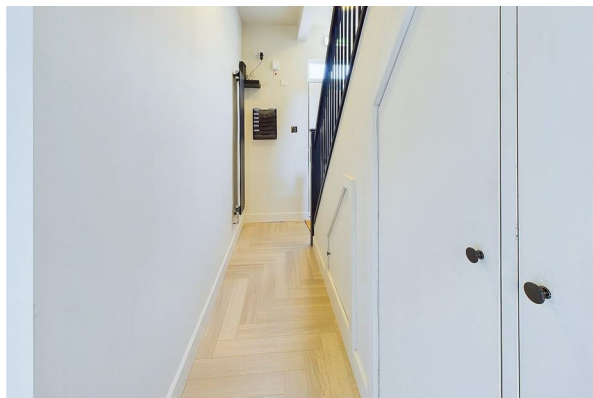
****Single Occupancy Only**** Welcome to Gordon Street, located in the heart of Coventry's City Centre! This charming house share offers a cosy reception room, a comfortable bedroom, and a modern en-suite shower room, making it the perfect place to call home.

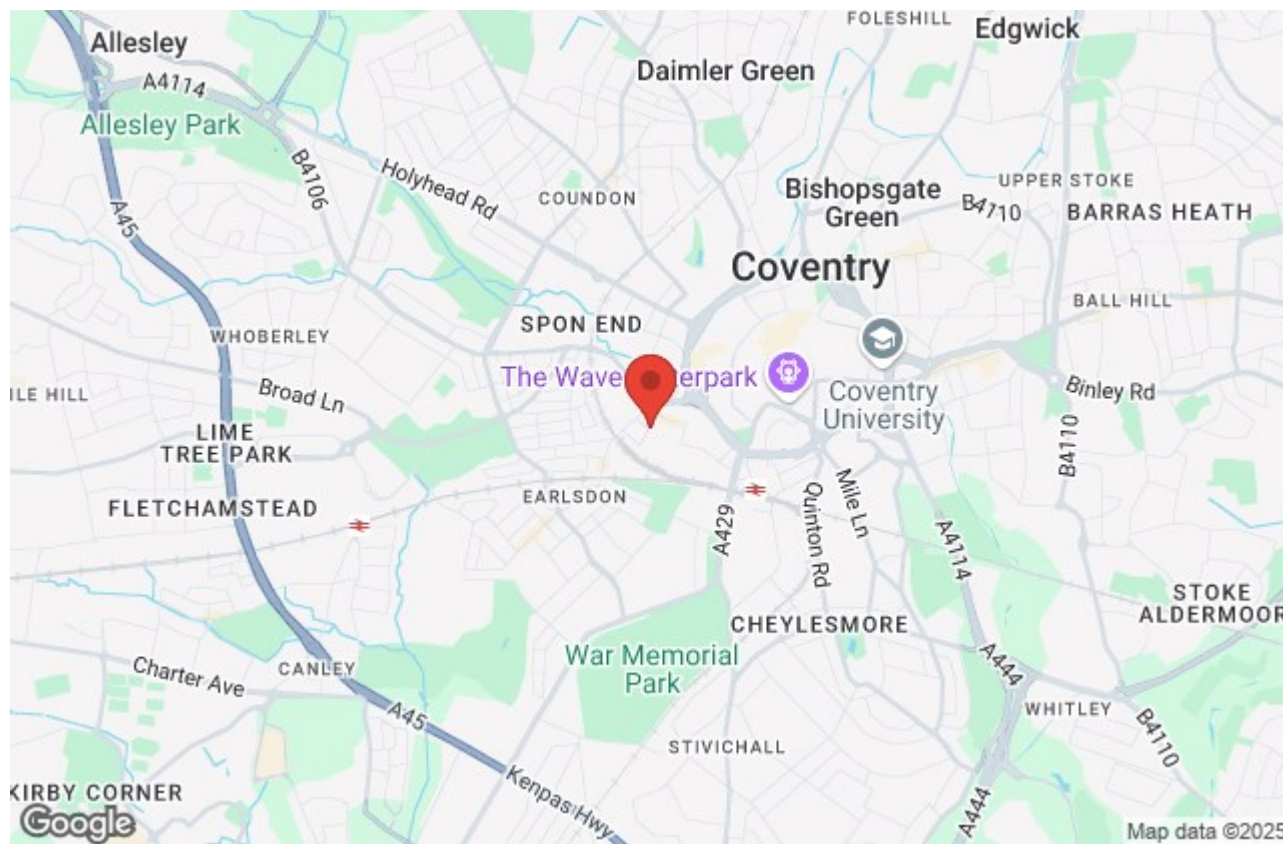
Forget the hassle of furnishing your new home - this property comes fully furnished throughout, allowing you to move in and start enjoying your new space right away. Don't miss out on this fantastic opportunity to live in a beautifully renovated house share in the heart of Coventry.

Recently renovated with great attention to detail, this property boasts a stylish interior design that is sure to impress. The best part? All utility bills are included in the rent - from gas and electricity to water, Wi-Fi, and even council tax.

Convenience is key with this property, as it is less than a 5-minute walk into the bustling City Centre, providing easy access to shops, restaurants, and entertainment venues as well as a short walk into Earlsdon and the local High Street.







Prominence Estates
5 Queen Isabells Avenue,
Cheylesmore,
Coventry,
CV3 5GE

02476 309 826
lettings@prominenceestates.com
www.prominenceestates.com


PROMINENCE
— ESTATES —